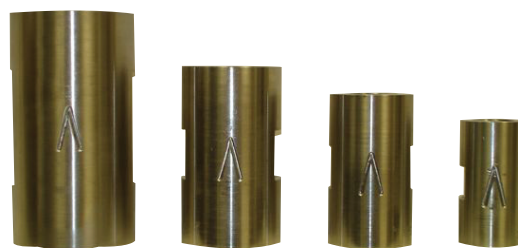


## Non Return (Check) Valve

The N08's are a series of non return (check) valves. They are suited for low to high pressure applications, and are used to prevent backflow of media.



### Standard Features

**Valve Size:**

- 3.5mm
- 7.5mm
- 9.5mm
- 11.5mm
- 15.3mm

**Materials of construction:**

- BODY - STAINLESS STEEL - BS EN 10088 1.4401
- SPRING - PHOSPHATED & OILED
- PAD - NITRILE
- ALL OTHER PARTS - STEEL ZINC PLATED

**Lift pressure:**

- 1 BAR

**Connections:**

- 1/4" BSPP
- 3/8" BSPP
- 1/2" BSPP
- 3/4" BSPP
- 1" BSPP

**Maximum Inlet Pressures:**

- 413 BAR (6000 PSI)

**Media:**

- LIQUIDS AND GASES

**Weight:**

SEE DIMENSION TABLE - PAGE 89

### Additional Features

- PAD - FLUOROCARBON
- ALL OTHER PARTS - STAINLESS STEEL 1.4571

### Options

**Connections:**

- 3/8" NPT
- 1/2" NPT
- 3/4" NPT

**Lift Pressures**

- 0.2 BAR
- 0.5 BAR
- 2 BAR
- 3 BAR

## Applications

- Compressors
- Dryer systems
- Filter systems
- Brewery plants
- Gas & liquid sampling
- Pump pressure control
- Research laboratories
- Aerospace ground support
- Oil & gas industry
- Marine industry
- Mining industry
- General industry

## Ordering Information

TYPE	MATERIAL OPTION	CONNECTIONS	ELASTOMER	LIFT OPTION
N08	A9 (ST/STL)	E1 (1/4" BSPP) E2 (3/8" BSPP) E3 (1/2" BSPP) E5 (3/4" BSPP) E6 (1" BSPP)	N (NITRILE) V (FLUOROCARBON) E (EPDM)	(BLANK FOR BASIC) 01 (0.2 BAR) 02 (0.5 BAR) 03 (2 BAR) 04 (3 BAR)

ORDERING INFORMATION EXAMPLE:

N08A9E1N

## Notes

## Technical Specifications

### Pressure

	PRESSURE
TEST (PROOF) PRESSURE	620 BAR (8990 PSI)
MAXIMUM INLET PRESSURE	413 BAR (6000 PSI)

### Leakage

STANDARD	BUBBLE TIGHT (TYPICALLY $10^{-6}$ $10^{-8}$ atm.cm <sup>3</sup> /sec <sup>-1</sup> )
ON REQUEST	HELIUM LEAK TESTED TO $10^{-8}$ $10^{-8}$ atm.cm <sup>3</sup> /sec <sup>-1</sup>

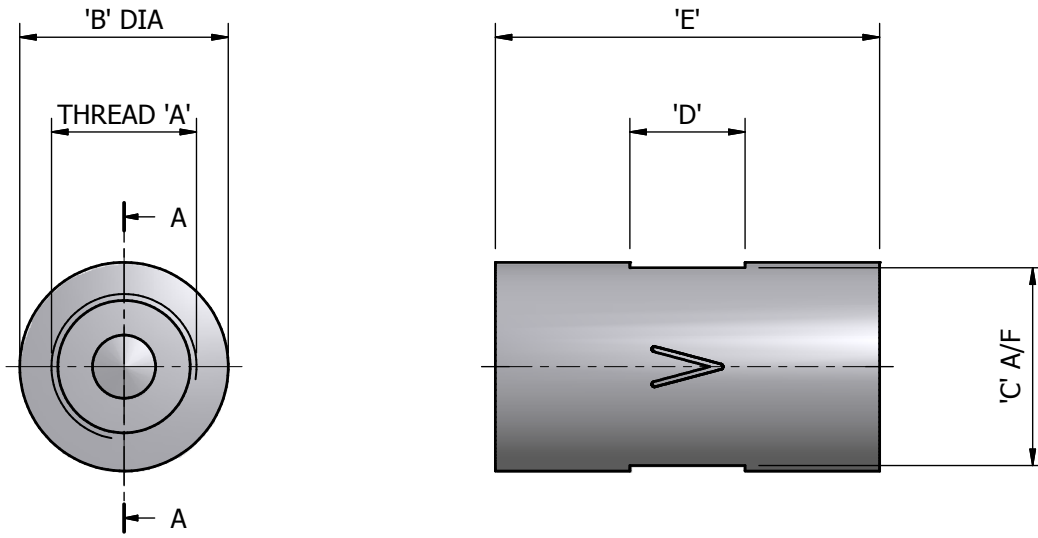
### Temperature Range

	TEMPERATURE	BODY MATERIAL
STANDARD	-35°C TO +100°C	ALL
OPTION	-25°C TO +120°C	CONSULT IVP

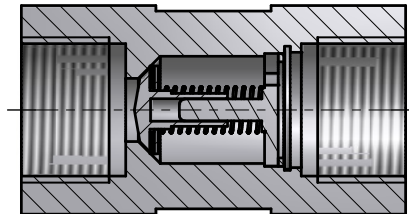
### Valve Size and Flow Area

NOMINAL SIZE	3.5mm	7.5mm	9.5mm	11.5mm	15.3mm
ORIFICE AREA A1	6.45mm <sup>2</sup> (0.01in <sup>2</sup> )	45.16mm <sup>2</sup> (0.07in <sup>2</sup> )	71mm <sup>2</sup> (0.11in <sup>2</sup> )	103mm <sup>2</sup> (0.16in <sup>2</sup> )	184mm <sup>2</sup> (0.295in <sup>2</sup> )
FLOW COEFFICIENT	Kv=0.28 (Cv=0.32)	Kv=1.35 (Cv=1.6)	Kv=2.1 (Cv=2.4)	Kv=3.04 (Cv=3.54)	Kv=5.33 (Cv=6.2)

## Technical Specifications



SECTION VIEW 'A-A'



### Dimensions

'A'	'B'	'C'	'D'	'E'	WEIGHT
1/4" BSPP	20	17	10	38	0.07 Kg
3/8" BSPP	26	24	13	51	0.15 Kg
1/2" BSPP	31	27	15	58	0.25 Kg
3/4" BSPP	38	36	21	70	0.43 Kg
1" BSPP	50	46	25	92	0.52 Kg